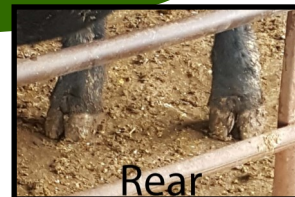


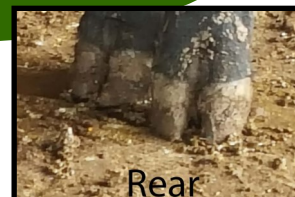
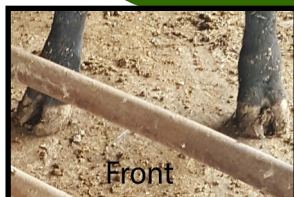
A Step Ahead of the Curve... Look At the Feet.



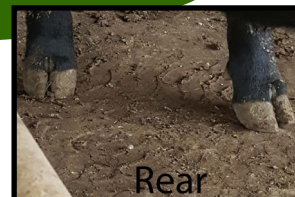
Lot 1—7884



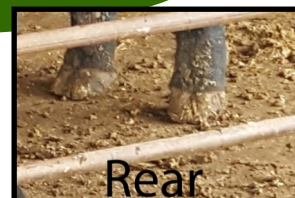
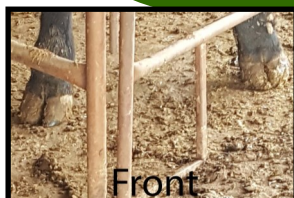
Lot 5—725



Lot 10—719



Lot 28—7068



LOOK BEFORE YOU BUY

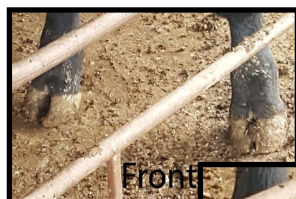
A Picture Says It All

We all want better “feet and leg structure” in our cattle. For all the talk, we don’t see much progress. When evaluating some bulls for AI use and when looking at cattle in the many sales we attend, we have a hard time getting any help on what these feet and legs really look like.

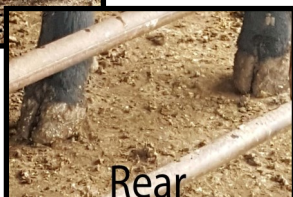
The American Angus Association has introduced ‘foot scores’ and has recently issued their first EPD’s on high usage stud bulls. While this may give a lot of help in the future, it will be some time before these have meaningful significance. In the mean time, we all should spend more time evaluating the quality of the feet and legs in the animals we produce and in the ones we purchase. They greatly effect the longevity of the animal and the profitability of our program

At Lienetics Ranch and Willer Timber Ridge, we believe a picture is worth a thousand words, so *we have introduced: ‘look before you buy’*. We said bulls had to have good ‘feet and leg structure’ to be qualified to be in the sale...every bull in the catalog passed that test. Now we are uniquely providing a photo of the bulls feet for you to see for yourself. We think this may be a first in the industry. These photos are available at each of our websites www.Lienetics.com and www.wtrangus.com





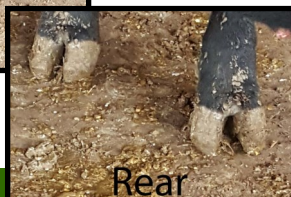
Lot 2
788



Rear



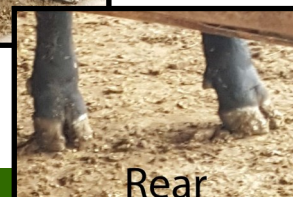
Lot 3
7349



Rear



Lot 4
7043



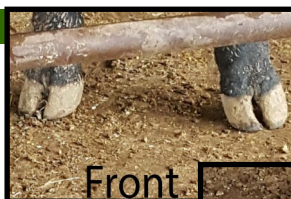
Rear



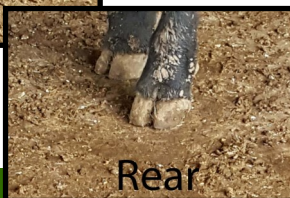
Lot 6
7454



Rear



Lot 7
7389



Rear



Lot 8
7814



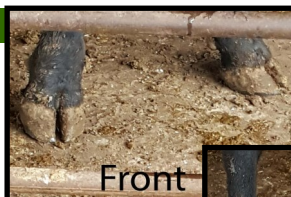
Rear



Lot 9
723



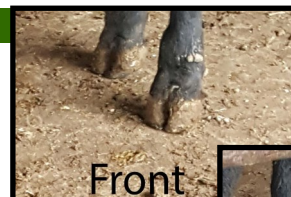
Rear



Lot 11
7678



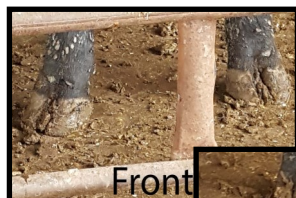
Rear



Lot 13
7921



Rear



Lot 14
7418



Rear



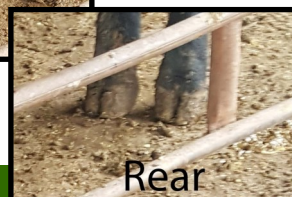
Lot 16
7838



Rear



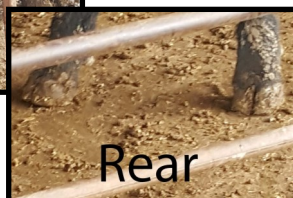
Lot 17
7590



Rear



Lot 18
7556



Rear



Lot 19
7562



Rear



Lot 20
7561



Front



Front

Lot 21
7553



Rear



Front

Lot 22
7574



Rear



Front

Lot 23
754



Rear



Front

Lot 24
7173



Rear



Front

Lot 25
701



Rear

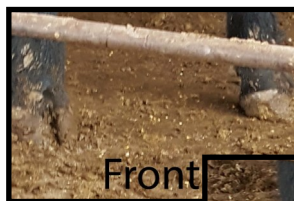


Front

Lot 26
733



Rear



Front

Lot 27
741



Rear

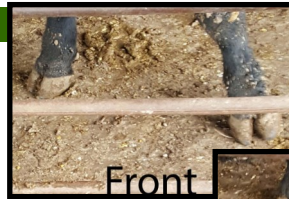


Rear

Lot 29
7090



Rear

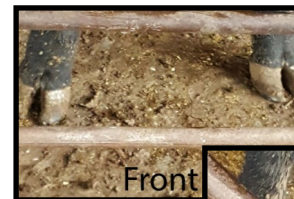


Front

Lot 30
7353



Rear

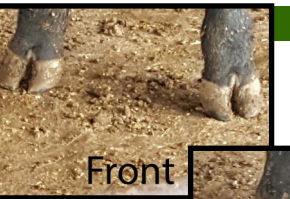


Front

Lot 31
7116



Rear



Front

Lot 32
7361



Rear



Front

Lot 33
7057



Rear



Front

Lot 34
7261



Rear



Front

Lot 35
717

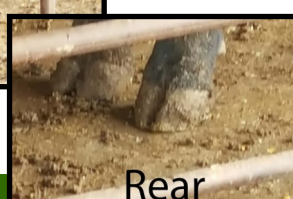


Rear

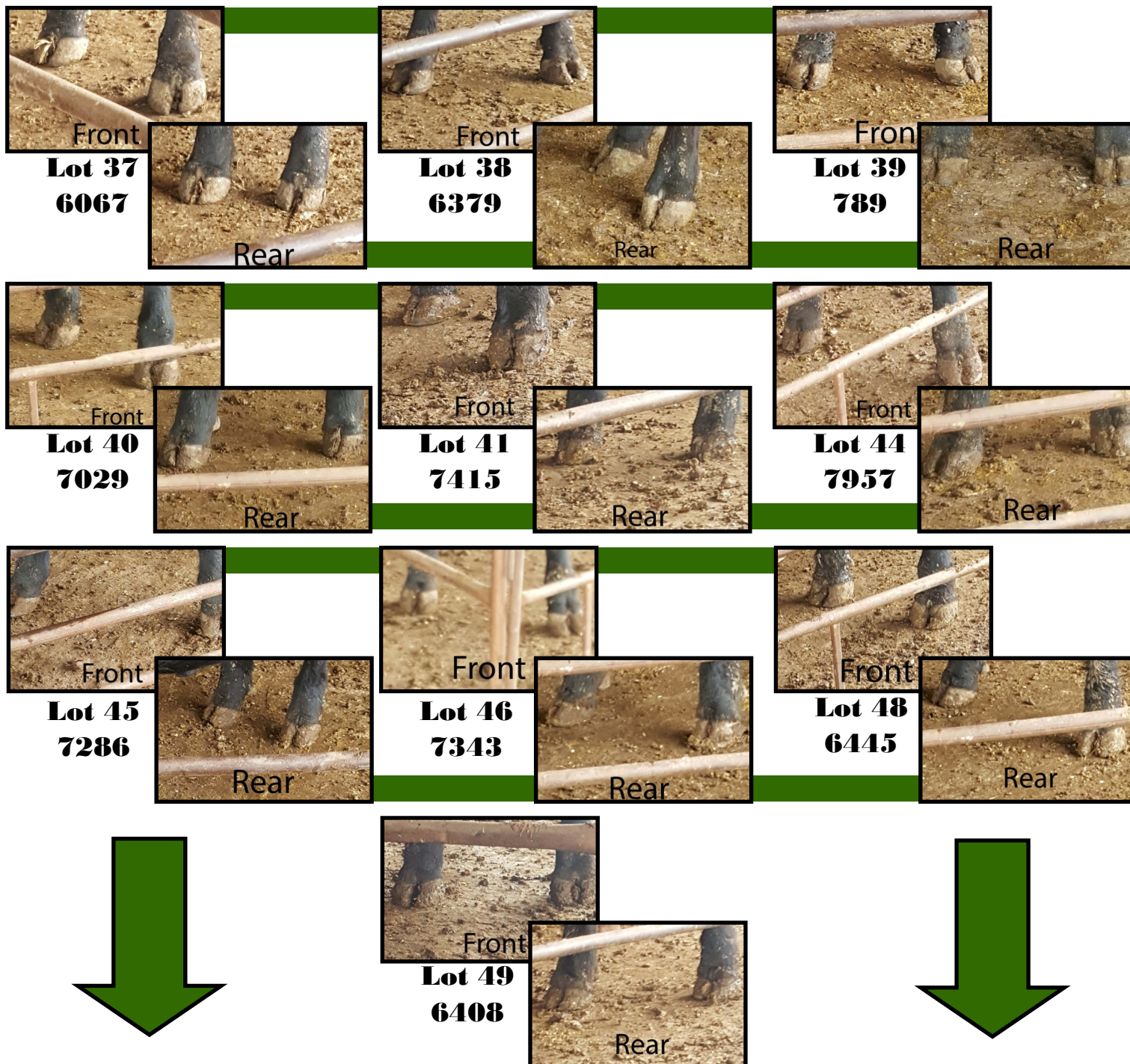


Front

Lot 36
720



Rear



LOOKING FOR MUSCLE? FAST GROWTH TO WEANING?

You're at the right place!

Ave Yrlg Angus Bull 12.6" Ribeye

Sale ave RE EPD 0.62... Top 30%

60% of bulls in this sale are over 15"

Ave \$W \$62.21... Top 20%

ULTRASOUND DATA

ULTRASOUND DATA ON ALL BULLS

Lot	Herd ID	Adj Rib Fat	Adj Ribeye	Adj % IMF
1	7884	0.40	15.6	3.93
2	788	0.59	13.7	3.89
3	7349	0.49	16.2	5.58
4	7043	0.43	14.1	5.33
5	725	0.34	15.8	3.22
6	7454	0.29	13.8	2.38
7	7389	0.39	15.3	4.03
8	7814	0.61	12.5	4.73
9	723	0.49	12.1	5.20
10	719	0.45	13.2	4.37
11	7678	0.54	15.2	5.22
12	7668	0.47	15.1	4.40
13	7921	0.53	14.5	3.95
14	7418	0.49	14.3	4.18
15	7617	0.29	13.8	3.40
16	7838	0.36	17.1	3.32
17	7590	0.34	13.2	4.21
18	7556	0.31	14.3	2.94
19	7562	0.66	14.1	4.03
20	7561	0.39	14.3	3.76
21	7553	0.34	15.9	5.04
22	7574	0.27	15.3	3.16
23	754	0.31	14.2	3.45
24	7173	0.35	15.9	3.89
25	701	0.29	14.7	4.19
26	733	0.38	15.2	5.63
27	741	0.44	14.0	5.73

Lot	Herd ID	Adj Rib Fat	Adj Ribeye	Adj % IMF
28	7068	0.46	17.0	5.37
29	7090	0.39	15.5	4.92
30	7353	0.35	16.4	3.27
31	7116	0.41	17.9	3.56
32	7361	0.37	17.3	4.25
33	7057	0.38	15.2	3.08
34	7261	0.25	15.1	3.88
35	717	0.33	14.0	2.99
36	720	0.23	15.2	3.18
37	6067	0.50	17.2	4.91
38	6379	0.19	13.4	2.69
39	789	0.23	16.3	2.66
40	7029	0.26	16.7	3.96
41	7415	0.50	15.8	3.17
42	7098	0.46	15.0	3.25
44	7957	0.30	13.3	3.27
45	7286	0.23	15.4	2.75
46	7343	0.31	15.1	3.35
48	6445	0.48	16.3	4.29
49	6408	0.67	15.7	3.50
52	6488	0.32	17.2	3.47
53	647	0.38	15.0	3.32
60	03E	0.31	13.8	2.78
61	02E	0.19	12.1	1.95

AVERAGES | Adj Rib Fat: 0.38 | Adj RE: 15.0 | Adj % IMF: 3.82